



ASX : ABZ

## ASX ANNOUNCEMENT

16 June 2011

### CEO Presentation at Gold Coast Resources Showcase

In accordance with the requirements of Listing Rule 3.1 we submit the attached material being presented today at the Gold Coast.

Mr Ian Levy, CEO is making the presentation.

### For further information please contact

Investor Relations, Henry Kinstlinger

Telephone: +61 2 9251 7177

#### **About Australian Bauxite Limited: ASX Code ABZ**

Australian Bauxite Limited (ABx) holds the core of the newly discovered Eastern Australian Bauxite Province. Its 35 bauxite tenements in Queensland, NSW and Tasmania covering close to 8,000 km<sup>2</sup> were rigorously selected on 3 principles:

1. good quality bauxite;
2. proximity to infrastructure connected to export ports; and
3. free of socio-environmental or native title land constraints.

All tenements are 100% owned and free of obligations for processing and third-party royalties. ABx has already discovered many bauxite deposits and new discoveries are still being made as knowledge and expertise grows.

The company's bauxite is high quality and can be processed into alumina at low temperature – the type that is in short-supply globally.

ABx has the potential to create significant bauxite developments in three states - Queensland, New South Wales and Tasmania. Its bauxite deposits are favourably located for direct shipping of bauxite to both local and export customers. Laboratory results from recent drilling of the ABx discoveries of bauxite in Tasmania are yet to be evaluated, however, bauxite is confirmed to extend over relatively large areas.

#### **AUSTRALIAN BAUXITE LIMITED**

ACN 139 494 885

Level 2 Hudson House 131 Macquarie Street Sydney NSW 2000  
p: +61 2 9251 7177 f: +61 2 9251 7500

w: [australianbauxite.com.au](http://australianbauxite.com.au) e: [corporate@australianbauxite.com.au](mailto:corporate@australianbauxite.com.au)

# AUSTRALIAN BAUXITE LIMITED

16-17 June 2011

## Two Possible Projects Identified

Bauxite is the ore for aluminium and alumina

**ASX Code “ABZ”**

## COMPLETE SUMMARY

Level 2 Hudson House 131 Macquarie St  
Sydney NSW 2000 Australia

Phone: +61 2 9251 7177

Facsimile: +61 2 9251 7500

E: [corporate@australianbauxite.com.au](mailto:corporate@australianbauxite.com.au)

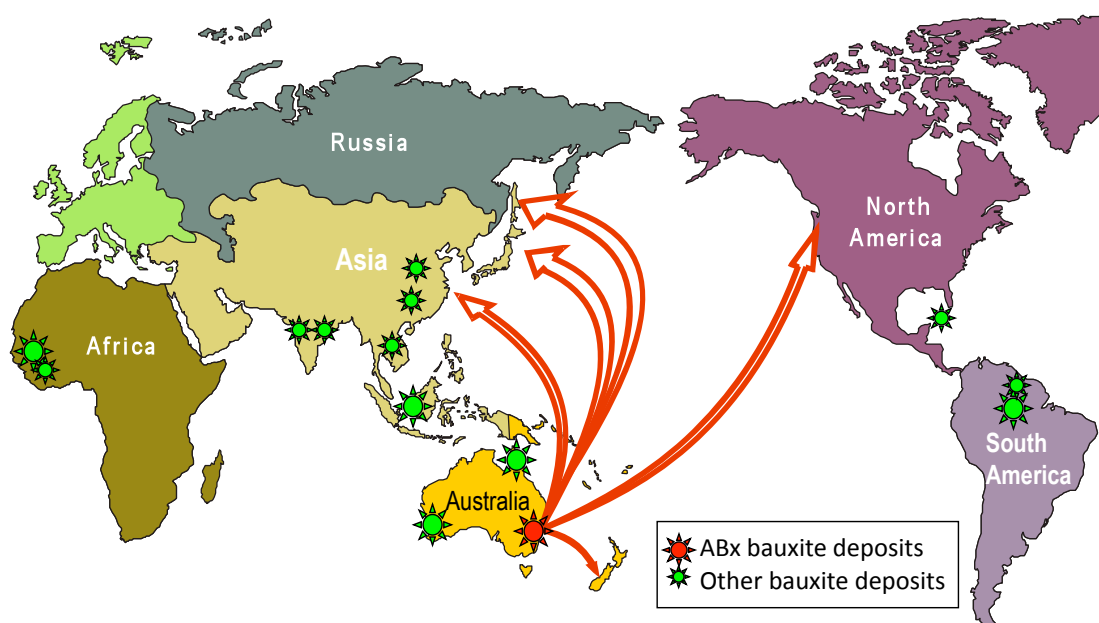
Ian Levy, CEO

Mob: 0407 189 122

E: [ilevy@australianbauxite.com.au](mailto:ilevy@australianbauxite.com.au)

1

## Mission 1 Sell bauxite products to Asia-Pacific especially China



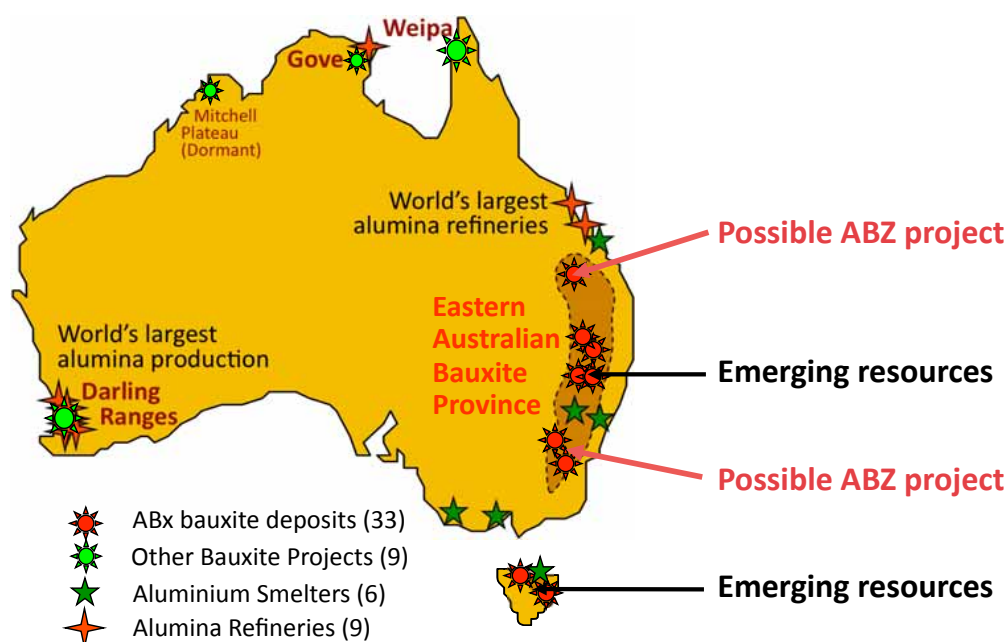
**Australia & Indonesia supply China's huge refineries**

2



AUSTRALIAN BAUXITE LIMITED

## Mission 2 Sell bauxite products to Australia's large Aluminium Industry



**No new bauxite mines in 30 years.**

**STARTING TO EXPAND NOW**



3

## Corporate Details ABZ 4th best performing IPO of 2009-10

**ASX Code : ABZ** Listed 24 Dec'09 at \$0.20

Shares	100.6 million
Options	10.3 million
Market Cap (\$0.60)	\$66.5 million
Cash (31 March)	\$7.6 million = 2yr budget
Share range	\$0.30 to \$0.84
Avg Daily Volume	110,000

Major Shareholders	Shares	%
Hudson Resources*	55.6 million	55.3%
State One Capital	7.4 million	7.4%
Macquarie Funds	2.7 million	2.7%
Soul Pattinson	1.9 million	1.9%
Top 20 Holders	77.7 million	77.2%

\* Hudson shares escrowed to Dec' 11



### Board of Directors

Peter Meers	Non-executive Chairman
Ian Levy	CEO & Managing Director
Jacob Rebek **	Executive Director
Vincent Tan	Non-executive Director
Wei Huang	Non-executive Director
Henry Kintslinger	Company Secretary

\*\* Chief Geologist Jacob Rebek is ex CRA (Rio) Chief Geologist, Discovered Century Zinc '93 & Eastern Australian Bauxite '06-09



4

## Forward Looking Statement

Whilst based on information from sources considered reliable, Australian Bauxite Limited (**ABx**), its directors, employees and consultants do not represent, warrant or guarantee, expressly or impliedly, that the information in this document and presentation is complete or accurate. To the maximum extent permitted by law, ABx disclaims any responsibility to inform any recipient of this document and presentation of any matter that subsequently comes to its notice, which may affect any of the information contained in this document and presentation.

## JORC and Competent Person Statement

Information herein relating to Exploration Results, Resources and Resource Targets is based on information compiled by Ian Levy BSc MSc who is a Fellow of The Australasian Institute of Mining and Metallurgy and a Fellow of the Australian Institute of Geoscientists. Mr Levy is employed by ABx as Chief Executive Officer.

Mr Levy has more than five years experience relevant to the style of mineralisation and type of deposit being reported and to the activity which he is undertaking to qualify as a Competent Person as defined in the 2004 Edition of the 'Australasian Code for Reporting of Exploration Results, Minerals Resources and Ore Reserves' (the JORC Code). This report is issued with the prior written consent of the Competent Person as to the form and context in which it appears.

## Exploration Target Statement

ABx has an exploration target of 200 to 300 million tonnes of bauxite, based on Mineral Resources announced in mid 2010 of 35 million tonnes of bauxite at Inverell <sup>4,5</sup> from 15% to 20% of the known bauxite deposits on Exploration Lease EL 6997 in northern NSW and 25 million tonnes of bauxite at Taralga <sup>1,2,3</sup> from approximately 50% of the bauxite targets on Exploration Lease EL 7357 in southern NSW. In accordance with the JORC Code, readers are advised that "the potential quality and grade is conceptual in nature, that there has been insufficient exploration to define full Mineral Resources and that it is uncertain if further exploration will result in the determination of a Mineral Resource". As first-pass drilling has proceeded across most of its tenements, ABx has seen no reason to vary its exploration target.

## JORC Code Compliant Public Reports

The Company advises that this presentation contains summaries of Exploration Results and Mineral Resources as defined in the 2004 Edition of the 'Australasian Code for Reporting of Exploration Results, Mineral Resources and Ore Reserves' ("JORC Code").

The following table references the location of the Code-compliant Public Reports or Public Reporting on which the summaries are based. These references can be viewed on the ASX website and the Company will provide these reports, free of charge, to any person who requests it.

Reference	Issue Date	Title of Notice as lodged with ASX
1	12/05/2011	Taralga Bauxite Resource Doubled to 25 Million Tonnes
2	06/12/2010	Taralga JORC Resource Update
3	16/09/2010	Taralga Maiden JORC Resource
4	02/09/2010	Inverell JORC Resource Update
5	10/02/2010	Inverell 22 Million Tonnes Maiden Bauxite Resource

## Direct Shipping Ore

In this presentation all references to direct shipping ore (**DSO**) refers to the company's exploration objective of defining DSO grade mineralisation. The potential quantity and grade of exploration targets is conceptual in nature, there has been insufficient exploration to define a Mineral Resource and it is uncertain if further exploration will result in the determination of a Mineral Resource.

## Business Overview

- 2 Projects at Pre-development stage
- 34 tenements 7,600 km<sup>2</sup> in QLD, NSW & Tas
- 2,200 drillholes totalling 19,400 metres
- Exploration Target 200Mt to 300Mt (big)
- Bauxite typically low silica, gibbsite bauxite
- No restrictions on bauxite exports
- Peers blocked by socio-environment
- Cash at 30 March = A\$7.6 million  
Annual expenditure = A\$3.6 million

**PFS underway**

**100% owned**

**Drilling fast**

**60Mt already**

**Premium**

**Can export**

**Many projects**

**2 yrs funded**

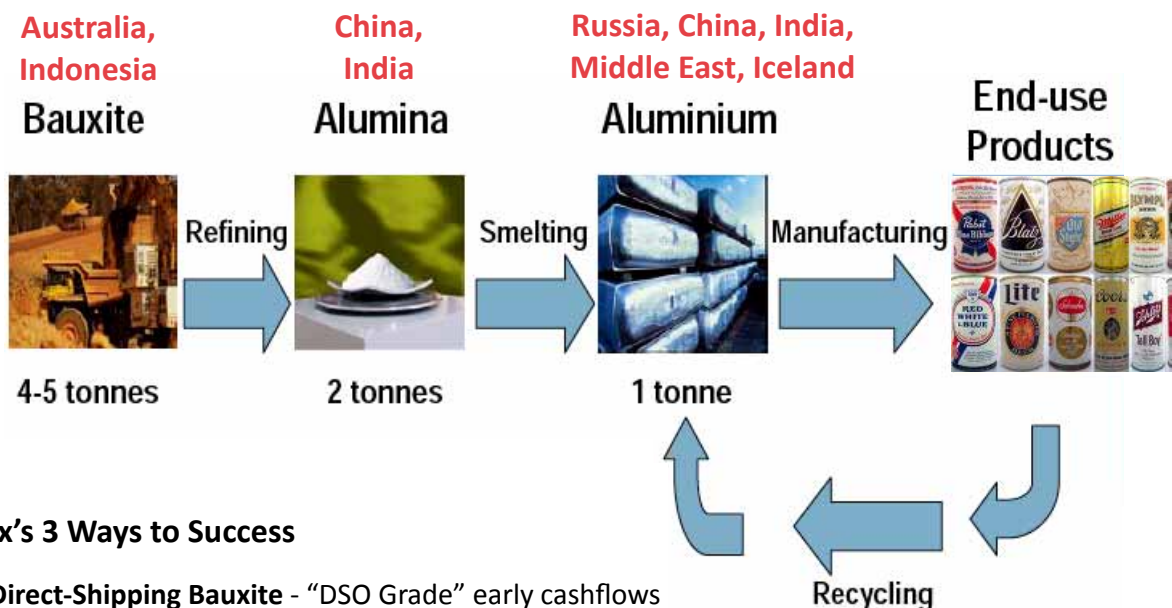
**No plans for  
fund raising**

7



AUSTRALIAN BAUXITE LIMITED

## Market Fundamentals



### ABx's 3 Ways to Success

1. **Direct-Shipping Bauxite** - "DSO Grade" early cashflows
2. **Upgraded, Consistent Bauxite** - higher revenue
3. **Major Bauxite Project and/or Alumina Refinery**
  - Needs +150 million tonnes of bauxite

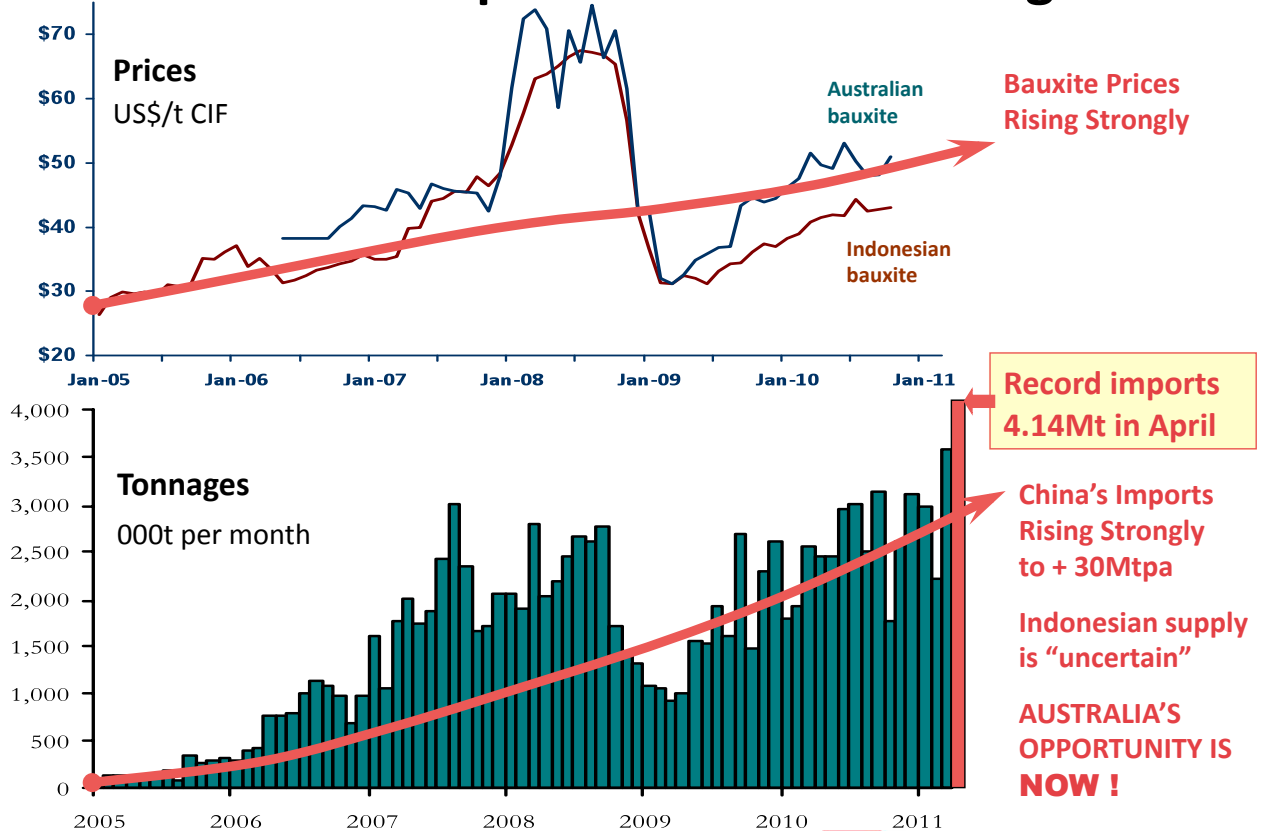
Sources: Alumina Limited  
Industrial Fact Sheets

8



AUSTRALIAN BAUXITE LIMITED

## China Bauxite Imports & Prices Growing



Sources: CM, MBC & China Customs



AUSTRALIAN BAUXITE LIMITED

## Rapidly Growing Resource Base & Discoveries



**Binjour** : high grade bauxite.  
+10Mt target\*

**Inverell** : 35 million tonnes<sup>4,5</sup>,  
+50Mt target\*

**Taralga** : 25 million tonnes<sup>1,2,3</sup>  
+35Mt target\*

**Tasmania** : Good bauxite

**Total Resources: 60Mt today\***

5%-20% of deposits tested

High alumina 40%-50%  $Al_2O_3$

Low silica 1.5%-4%  $SiO_2$

Gibbsite (alumina-trihydrate "THA")

\* See Exploration Target Statement  
& JORC Statement



AUSTRALIAN BAUXITE LIMITED



# Excellent bauxite results at Binjour



High Grade 45%  $\text{Al}_2\text{O}_3$   
Gibbsite 2%  $\text{SiO}_2$

Easily mined

Rail Line through the deposit needs expansion

Government-industry study of rail upgrade

**DRILLING SOON**

19 Holes	From m	To m	Length m	Yield % wt	Leach 143degC Analyses			Total Analyses for Sieved at 0.26mm					
					$\text{Al}_2\text{O}_3$ avl %	Rx $\text{SiO}_2$ %	Avl/Rx ratio	$\text{Al}_2\text{O}_3$ %	$\text{SiO}_2$ %	A/S ratio	$\text{Fe}_2\text{O}_3$ %	$\text{TiO}_2$ %	LOI %
Average	8.6	13.9	5.3	66%	41.1	1.9	21.6	45.1	2.2	20.6	23.0	3.6	25.5

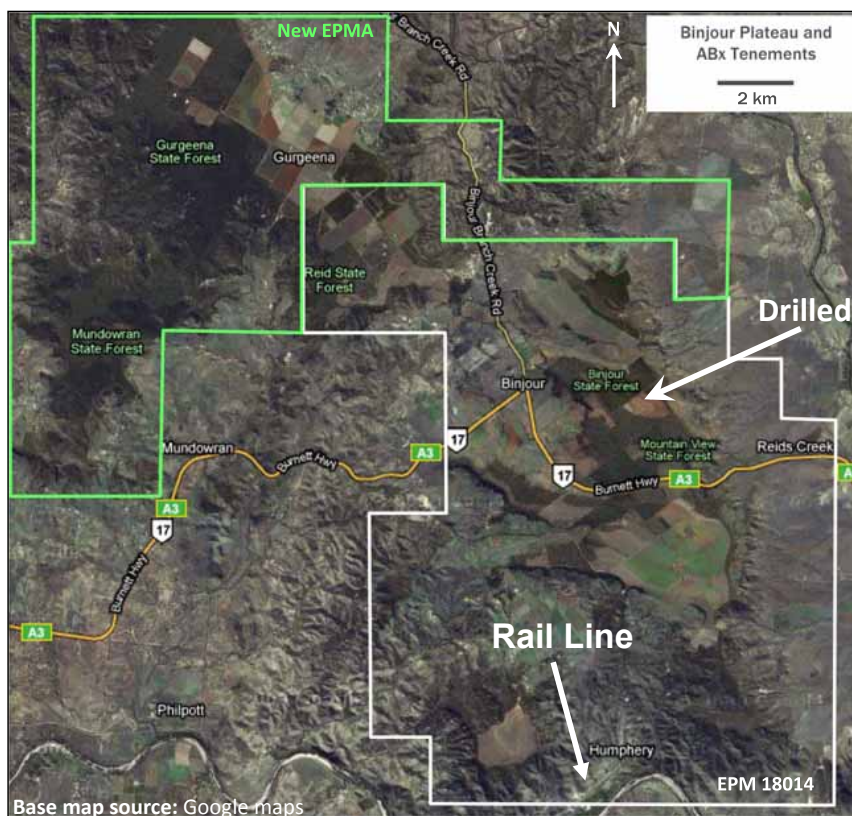
Leach conditions to measure available  $\text{Al}_2\text{O}_3$  avl & reactive Rx  $\text{SiO}_2$  were 1g leached in 10ml of 90gpl NaOH at 143 degrees C for 30 mins. "Avl/Rx" ratio is (Available  $\text{Al}_2\text{O}_3$ )/(Reactive  $\text{SiO}_2$ ). "A/S" ratio is (Total  $\text{Al}_2\text{O}_3$ )/(Total  $\text{SiO}_2$ ). Values above 10 are excellent



AUSTRALIAN BAUXITE LIMITED

11

## Binjour Plateau 100% Controlled by ABx



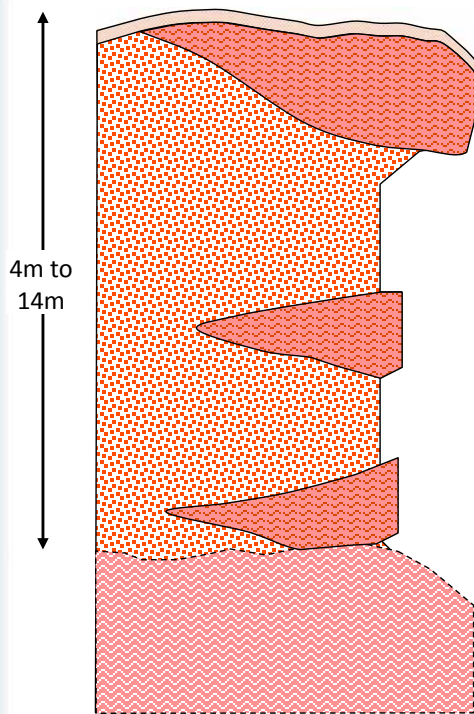
- 10% of target area tested
- Thick, hi quality bauxite under a clay layer
- Rail line nearby
- mapping found bauxite **at surface**
- **High grade drilled at surface in March 11**



AUSTRALIAN BAUXITE LIMITED

12

## Excellent bauxite at Binjour



Variably thick soil

Red clay (variable depth 0 to 13 metres)  
Free-diggable

Main bauxite type – gibbsite, low silica, free-dig

Basal clays

13

## Excellent bauxite results at Binjour

Hole No	From m	To m	Length m	Yield % wt	Leach 143degC			Total Analyses					
					Al <sub>2</sub> O <sub>3</sub> avl %	Rx SiO <sub>2</sub> %	Avl/Rx ratio	Al <sub>2</sub> O <sub>3</sub> %	SiO <sub>2</sub> %	A/S ratio	Fe <sub>2</sub> O <sub>3</sub> %	TiO <sub>2</sub> %	LOI %

### Selective Mining Potential (brown sugar only)

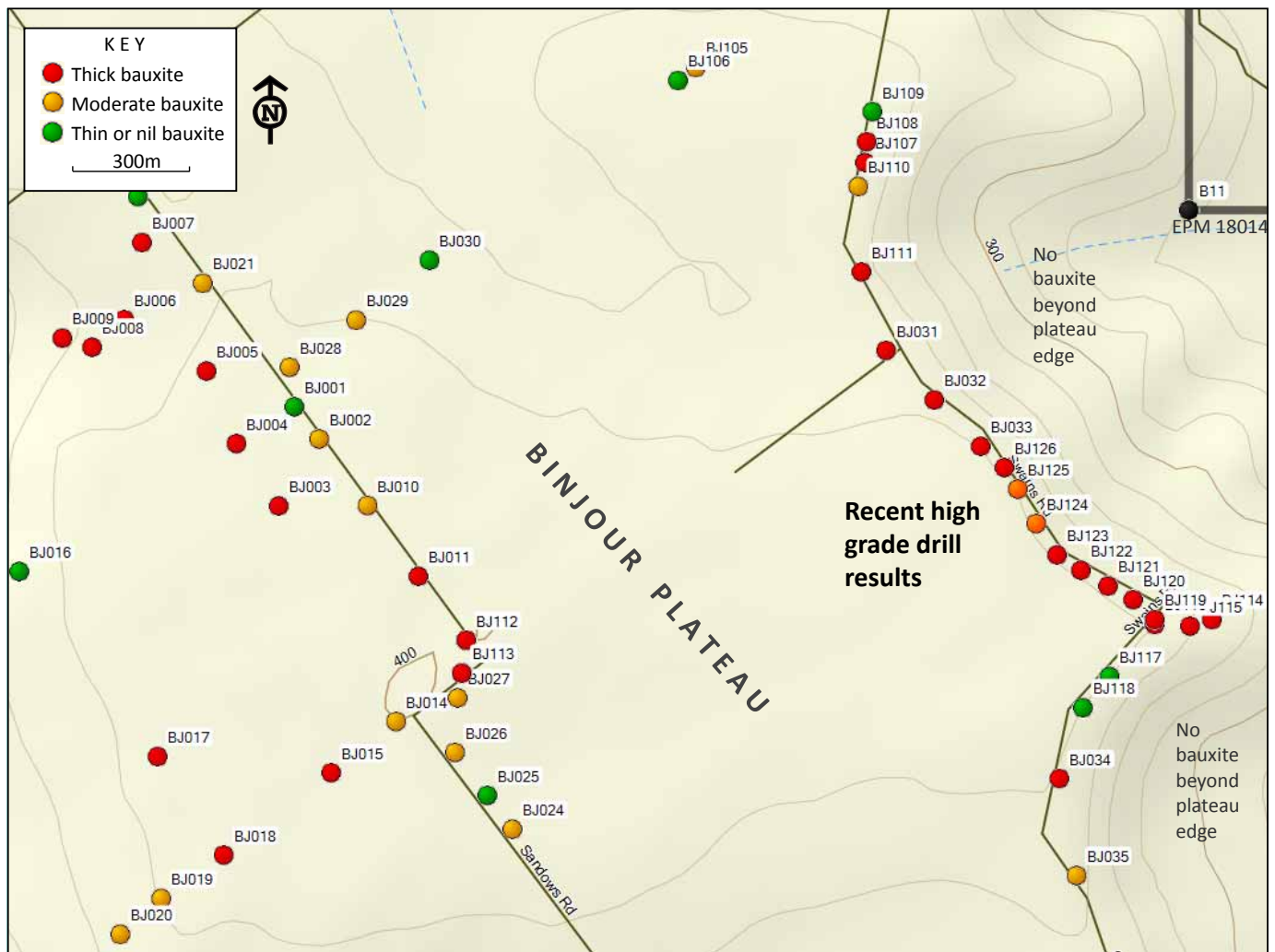
BJ121	7	8	1	83%	30.2	6.1	5.0	39.8	6.5	6.1	25.3	4.4	23.0
BJ121	8	9	1	78%	42.5	0.5	85.0	45.3	0.6	75.5	23.7	3.5	26.2
BJ121	9	10	1	70%	43.3	0.4	108.3	47.3	0.5	94.6	21.8	2.8	27.0
BJ121	10	11	1	57%	45.8	0.6	76.3	49.1	0.7	70.1	18.6	3.2	27.7
BJ121	11	12	1	66%	52.1	0.5	104.2	54.4	0.6	90.7	11.9	2.5	30.2
BJ121	12	13	1	61%	53.9	0.7	77.0	56.0	0.9	62.2	9.4	2.7	30.6
BJ121	13	14	1	63%	48.7	0.5	97.4	52.6	0.7	75.1	14.1	3.2	28.9
BJ126	10	11	1	58%	33.3	7.9	4.2	43.7	8.3	5.3	20.0	3.4	23.9
BJ126	11	12	1	59%	45.0	2.8	16.1	49.7	3.0	16.6	16.0	3.2	27.6
BJ126	12	13	1	59%	45.9	1.8	25.5	49.5	1.9	26.1	17.6	2.9	27.6
BJ126	13	14	1	69%	56.3	0.7	80.4	58.6	0.7	83.7	5.9	2.8	31.7
BJ126	14	15	1	75%	56.2	1.0	56.2	58.3	1.0	58.3	6.2	2.6	31.6
BJ126	15	16	1	74%	55.9	1.2	46.6	57.8	1.3	44.5	6.5	3.0	31.1

### Non-Selective Mining Potential (all ore zones bulked together)

ORE SELECTION					Leach 143degC			Total Analyses					
Holes in Bauxite	From m	To m	Length m	Yield % wt	Al <sub>2</sub> O <sub>3</sub> avl %	Rx SiO <sub>2</sub> %	Avl/Rx ratio	Al <sub>2</sub> O <sub>3</sub> %	SiO <sub>2</sub> %	A/S ratio	Fe <sub>2</sub> O <sub>3</sub> %	TiO <sub>2</sub> %	LOI %
11	8.2	13.4	5.2	61%	39.9	2.5	16.2	44.4	2.8	16.0	23.3	3.6	25.2
Strip ratio (waste/ore)				1.6									

14





## Taralga Resources Doubled to 25m tonnes <sup>1,2,3</sup>

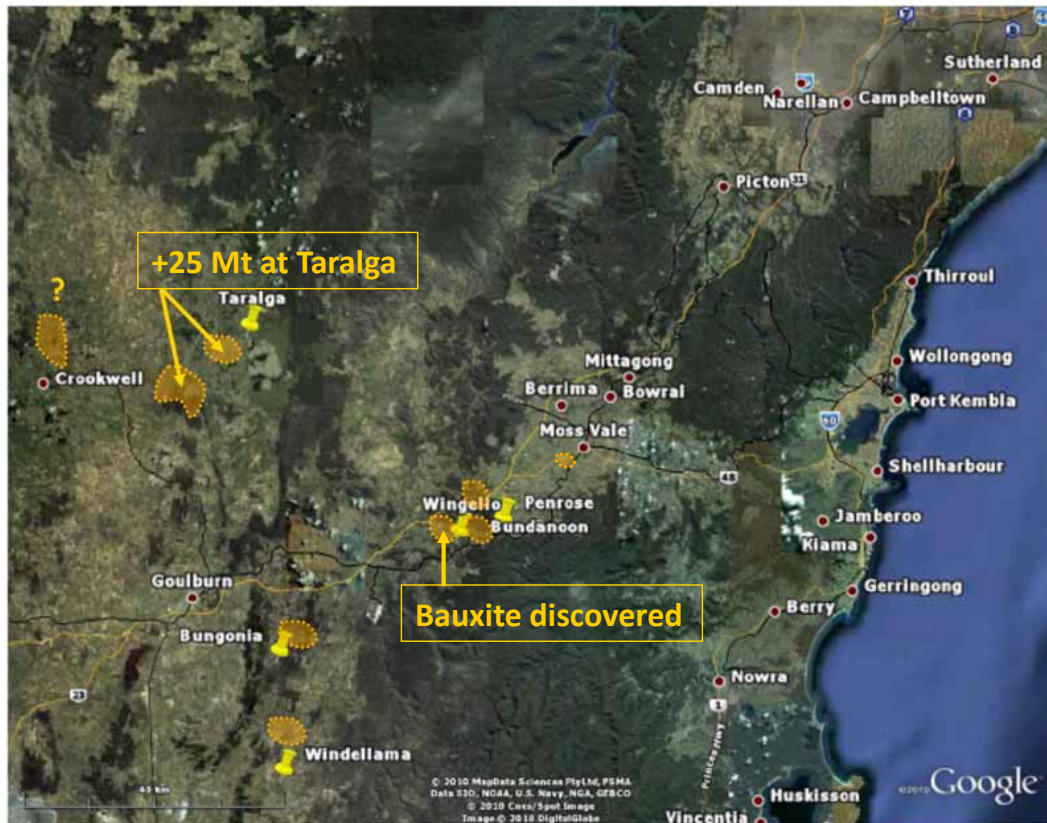


### Near Port Kembla

- 145km rail to Port
- DSO Grade ~ 50% of deposit
- New discoveries in Goulburn Area
- Goulburn Bauxite Project
- Prefeasibility Study baseline studies underway

- **MOST ADVANCED PROJECT**
- **GOULBURN BAUXITE PROJECT**

# GOULBURN BAUXITE PROJECT : Taralga 25Mt

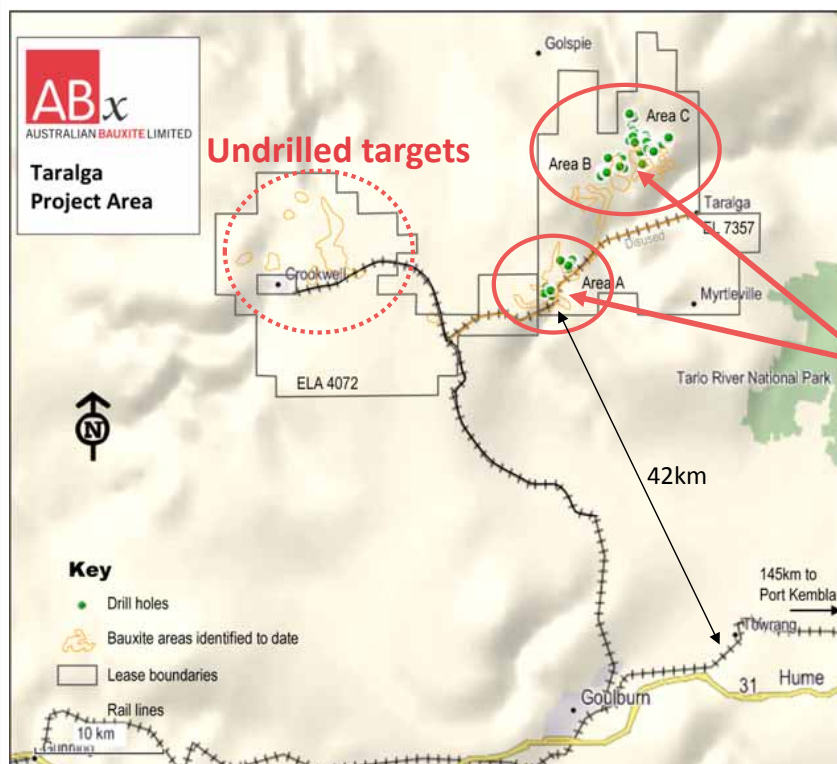


17



AUSTRALIAN BAUXITE LIMITED

## Taralga 25m tonnes <sup>1,2,3</sup> & growing. Near Port



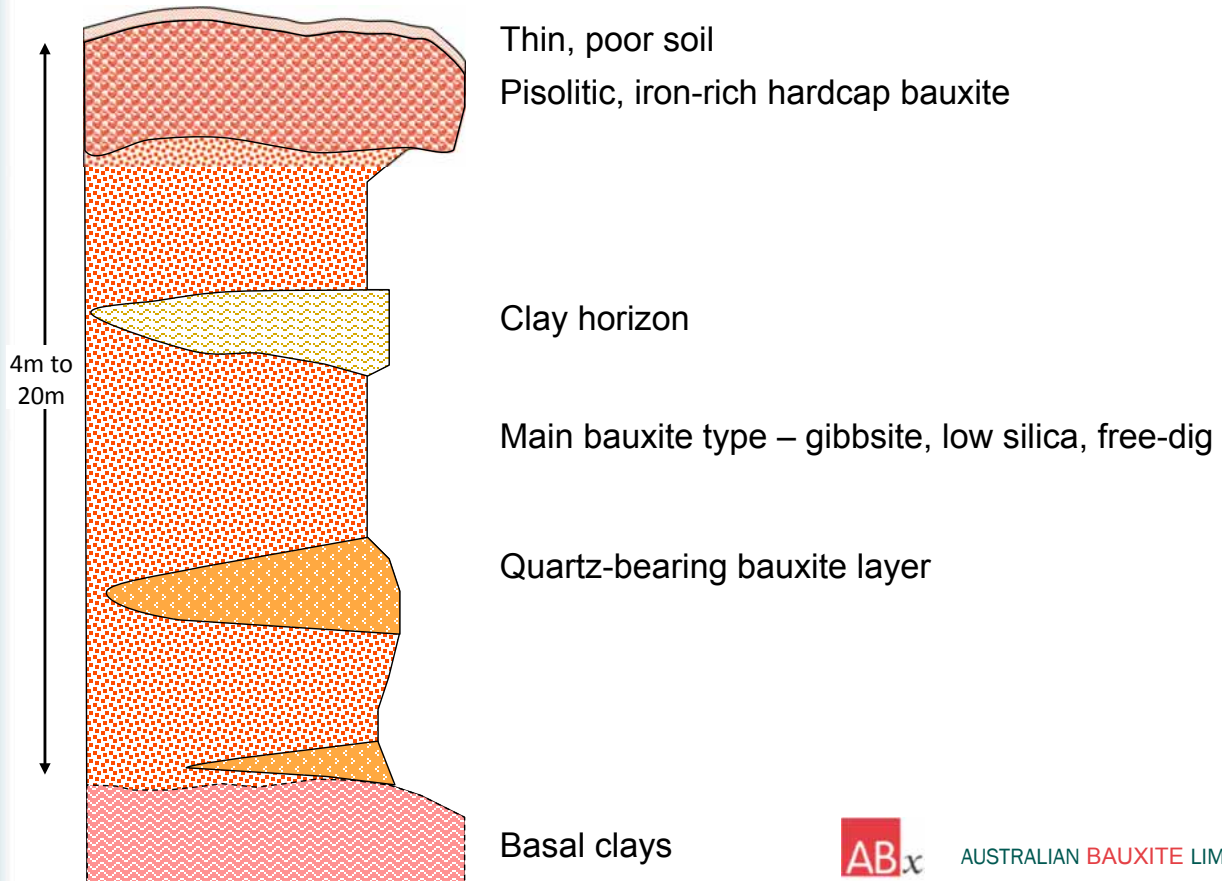
**25Mt announced  
12 May 2011 based  
on 577 holes totalling  
4,500 metres drilling**

18



AUSTRALIAN BAUXITE LIMITED

## Several bauxite types at Taralga (WA style)



## Bauxite Resources by types at Taralga

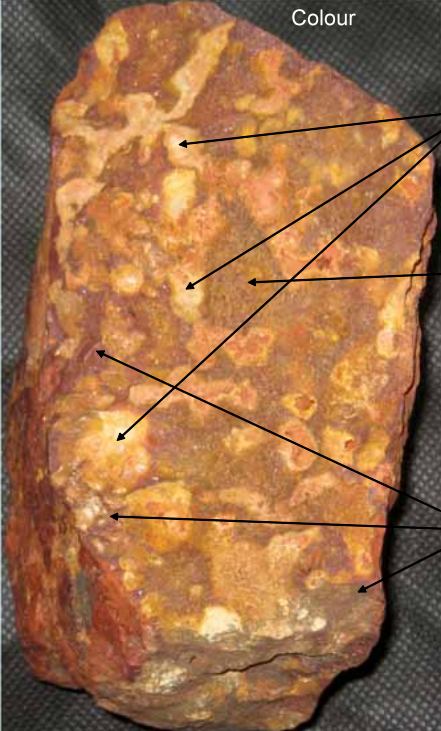
			Sieved at 0.26mm									
Resource category	Tonnes millions	Thick-ness	Al <sub>2</sub> O <sub>3</sub> avl %	Rx SiO <sub>2</sub> %	Avl/Sx Ratio	Al <sub>2</sub> O <sub>3</sub> %	SiO <sub>2</sub> %	A/S Ratio	Fe <sub>2</sub> O <sub>3</sub> %	TiO <sub>2</sub> %	LOI %	Yield %
Quartz-Bearing Gibbsite Ore												
Inferred	1.7	2.8 m	30.4	2.2	14.0	36.4	20.0	1.8	20.2	3.9	18.8	54%
Indicated	0.5	2.2 m	32.3	1.9	16.8	38.2	20.0	1.9	17.9	3.5	19.8	55%
TOTAL	2.2	2.7 m	30.8	2.1	14.5	36.8	20.0	1.8	19.7	3.8	19.0	54%
Main DSO Gibbsite Ore												
Inferred	3.5	4.3 m	34.1	2.3	14.7	39.8	4.3	9.2	28.6	4.1	22.2	53%
Indicated	6.5	4.3 m	35.4	2.2	16.0	40.9	4.3	9.4	27.1	4.1	22.8	55%
TOTAL	10.1	4.3 m	35.0	2.3	15.5	40.5	4.3	9.4	27.6	4.1	22.6	54%
Qtz-Bearing Pisolite Ore												
Inferred	2.1	3.4 m	20.0	2.4	8.4	32.8	19.7	1.7	31.5	2.9	12.3	57%
Indicated	0.9	3.4 m	19.6	3.1	6.4	33.1	18.5	1.8	31.3	3.3	12.8	62%
TOTAL	3.0	3.4 m	19.8	2.6	7.6	32.9	19.3	1.7	31.4	3.1	12.5	59%
Pisolite Ore (dehydrated)												
Inferred	3.7	3.3 m	20.8	1.6	13.0	36.1	4.5	8.1	43.0	3.4	12.2	73%
Indicated	6.4	3.5 m	20.5	1.4	15.1	35.8	4.6	7.7	42.8	3.7	12.2	66%
TOTAL	10.1	3.4 m	20.6	1.5	14.2	36.0	4.6	7.9	42.9	3.6	12.2	69%
RESOURCES: ALL TYPES COMBINED												
Inferred	11.1	4.1 m	25.7	2.0	12.7	36.6	9.3	3.9	33.7	3.6	15.9	61%
Indicated	14.2	5.1 m	27.0	1.8	14.7	37.8	5.8	6.5	34.8	3.9	16.9	60%
TOTAL	25.3	4.6 m	26.5	1.9	13.8	37.3	7.4	5.1	34.3	3.7	16.4	61%

Cut-off grades applied: 30% Al<sub>2</sub>O<sub>3</sub> & 2m thickness. Leach conditions to measure available Al<sub>2</sub>O<sub>3</sub>avl & reactive Rx SiO<sub>2</sub> is 1g leached in 10ml of 90gpl NaOH at 143 degrees C for 30 mins. "Avl/Srx" ratio is (Al<sub>2</sub>O<sub>3</sub>avl)/(Rx SiO<sub>2</sub>). Values above 10 are excellent. "A/S" ratio is Al<sub>2</sub>O<sub>3</sub>/SiO<sub>2</sub> but at Taralga, total SiO<sub>2</sub> includes quartz in some bauxite zones. Quartz is unreactive SiO<sub>2</sub>. Tonnage is for bauxite in-situ. Yield is for screening at 0.26mm. If a different beneficiation method is used, yield will be different. Tonnages requiring no upgrade will have 100% yield.



# Product Definition at Taralga Commenced

**Colour**



**TARALGA BAUXITE TYPES**

**Premium Grade Bauxite**  
Low iron, low silica, high alumina bauxite. Could be **refractory grade**. May contain Titanium Hydroxides in places?


**Standard Indian Grade Bauxite**  
Mod-high iron, low silica, moderate alumina bauxite. Iron present as haematite dusting within amorphous gibbsite and boehmite – iron is not separable without leaching

Quartz sand/gravel may be mixed in the bauxite – removable?

**Haematite veinlets**  
Iron-ore is separable via physical mineral dressing methods

**Possible methods:**  
Sequential crush-screen-density-colour-magnetics-leach cleanup

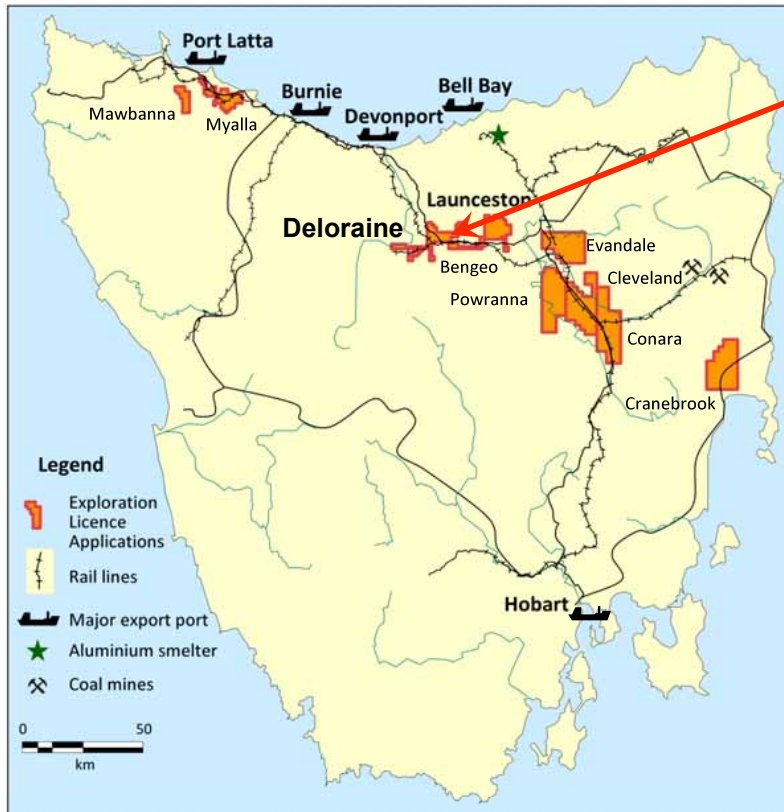
**Structure - texture**



## Port Kembla: being expanded



## Tasmania – the New Frontier.



- Near rail and ports
- Farmland – mainly grazing
- Landholder support
- New leases secure deposits
- **DRILLING 3Qtr 2011 (Weather Permitting)**

23

## Tasmania – the New Frontier.



- Lab results starting to arrive from early holes
- Early holes are not in main targets BUT:
- Ore-grade zones are encountered in Tas.
- **New leases cover large extensions**
- **DRILLING IN 2011**

Hole: DL 025			Leach 143degC			Total Analyses					
From	To	Yield	Al <sub>2</sub> O <sub>3</sub> avl	Rx SiO <sub>2</sub>	Avl/Rx ratio	Al <sub>2</sub> O <sub>3</sub>	SiO <sub>2</sub>	A/S ratio	Fe <sub>2</sub> O <sub>3</sub>	TiO <sub>2</sub>	LOI
m	m	% wt	%	%		%	%		%	%	%
0	1	62%	31.4	4.5	7.0	38.2	9.6	4.0	26.0	2.9	22.3
1	2	77%	41.4	0.7	59.1	44.4	1.1	41.1	25.6	2.7	25.5
2	3	78%	44.1	0.9	49.0	46.4	1.3	36.8	22.2	2.9	26.5
3	4	80%	40.2	1.5	26.8	44.3	2.0	21.7	24.4	3.1	25.4
4	5	62%	37.8	2.6	14.5	42.9	3.3	13.1	25.3	3.2	24.5
5	6	56%	33.9	5.1	6.6	40.6	5.8	7.0	25.9	3.8	22.9
6	7	77%	28.9	5.8	5.0	37.2	6.7	5.6	29.2	3.9	21.5

Leach conditions to measure available Avl Al<sub>2</sub>O<sub>3</sub> & reactive SiO<sub>2</sub> rx were 1g leached in 10ml of 90gpl NaOH at 143 degrees C for 30 mins.

"Avl/Srx" ratio is (Available Al<sub>2</sub>O<sub>3</sub>)/(Reactive SiO<sub>2</sub>).

"A/S" ratio is (Total Al<sub>2</sub>O<sub>3</sub>)/(Total SiO<sub>2</sub>).

Values above 10 are excellent

24



## Inverell 35m tonnes & growing. Large Deposits



- Resources increased 64%
- Consistent 5.6m thick
- Less than 20% tested yet
- **Nearby Pindaroi & Guyra have thick bauxite too.**



Resource category	Tonnes Millions	Yield % at 0.26mm	Avl $Al_2O_3$ %	$SiO_2$ Rx %	Avl/Srx ratio	$Al_2O_3$ %	$SiO_2$ %	A/S ratio	$Fe_2O_3$ %	$TiO_2$ %	LOI %
Inferred	11.7	60-70%	38.7	4.4	9.3	38.9	5.6	7.3	26.9	4.3	22.2
Indicated	24.2	65-75%	35.6	4.2	9.1	34.7	5.3	6.8	25.1	4.0	21.1
<b>Total</b>	<b>35.9</b>	<b>60-75%</b>	<b>36.6</b>	<b>4.2</b>	<b>9.2</b>	<b>37.1</b>	<b>5.4</b>	<b>6.9</b>	<b>25.7</b>	<b>4.1</b>	<b>21.4</b>

Leach conditions to measure available Avl  $Al_2O_3$  & reactive  $SiO_2$  rx were 1g leached in 10ml of 90gpl NaOH at 143 degrees C for 30 mins.

"Avl/Srx" ratio is (Available  $Al_2O_3$ )/(Reactive  $SiO_2$ ).

"A/S" ratio is (Total  $Al_2O_3$ )/(Total  $SiO_2$ ).

Values above 10 are excellent



AUSTRALIAN BAUXITE LIMITED

25

## Landholder Relations – the key task



AUSTRALIAN BAUXITE LIMITED

26

# Why Mine Australian Bauxite? **We do it better**

## Alumina-Alcoa's Rehabilitation in WA



A mined area at Huntly prior to rehabilitation



The same mine pit after rehabilitation

**At Australian Bauxite Limited, our policy is to only operate where we are welcomed and to leave the land at least as good as we found it, and in many cases, better.**

**If the land is prime agricultural land, it is unlikely to underlain by bauxite. Bauxite infested areas tend to be drier and less fertile – with boulders of bauxite. We have a strong track record of respecting both strategic agricultural land and important ecosystems. We hope to be a respected corporate citizen wherever we operate.**

27



Bauxite Drilling



*Better Bauxite*

Tel: +61 (0) 2 9251 7177  
[www.australianbauxite.com.au](http://www.australianbauxite.com.au)

### Schematic section



### Thin Soil



**5th QLD Bauxite  
drilled May - July 2010**

Haden EPM17830 in QLD: bauxite outcrop.

28

